

East Yorkshire Solar Farm

Inception Meeting with the Planning Inspectorate

20 July 2022

AGENDA.

1. Introductions
2. Details of the proposed development
3. Activities to date
4. Indicative programme
5. EIA Scoping
6. Environmental Surveys
7. Stakeholder engagement to date
8. Consultation
9. Compulsory Acquisition and Crown land issues
10. Submission date

1. Introductions and meet the East Yorkshire Solar Farm Team

ABOUT.

Boom Power combine world class technology with industry leading expertise to deliver international solar infrastructure projects. Our ambition is underpinned by the formation of long-standing partnerships with one primary objective – to work in balance with nature to harvest our energy sustainably, shaping our world for future generations.

726

MEGAWATTS CONSTRUCTED

450,000

AVG HOMES POWERED PER YEAR

856

MEGAWATTS DEVELOPED

950,000

TONNES OF CO2 PREVENTED PER YEAR

OUR MISSION.

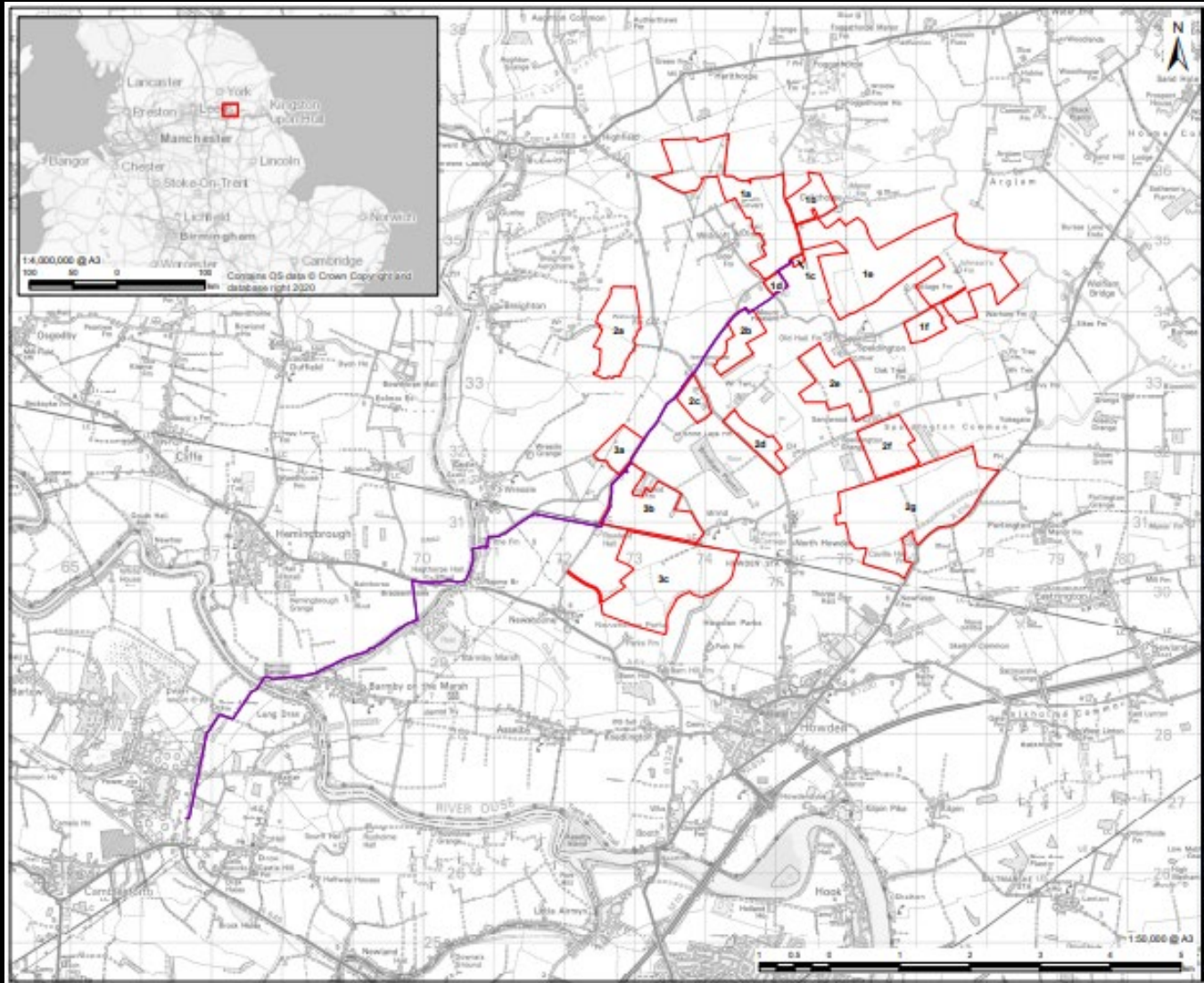
- ✓ Contribute towards a sustainable economy through the production of renewable energy
- ✓ Aid in the repair of our planet through our environmentally friendly and biodiverse approach
- ✓ Adopt the latest technologies to ensure we deliver pioneering projects
- ✓ Retain the ecological footprint of land post-development
- ✓ Build partnerships with likeminded people to jointly accelerate the reduction of our carbon footprint

TEAM - EAST YORKSHIRE SOLAR FARM



2. Details of the proposed development

SITE LOCATION



The site is located approximately 1.4km north -west from Howden.

River Derwent located to the west. River Ouse located to the south.

To the east, is the A614, which runs in a broadly north -south direction connecting with the M62 to the south and Great Driffield to the north -east.

There is a railway line located within the southern part of the site providing passenger services to Hull to the east and Selby/York to the west and north -west.

There are hamlets and villages located close to the site. This includes Brind, Willitof, Gribthrope, Spaldington and Brighton.

PROJECT DESCRIPTION



The project will comprise the construction, operation (including maintenance) of a ground mounted solar photovoltaic (PV) farm that will exceed 50MW. The proposals include the decommissioning of arrays and supporting infrastructure. The supporting infrastructure may include:

- Battery Energy Storage System (BESS)
- Solar stations, comprising electrical equipment such as inverters and transformers
- Substations
- Access tracks for maintenance and staff car parks
- Security fencing and CCTV
- Landscape planting to screen views, most likely through infilling and planting of hedgerows and trees
- Biodiversity Net Gain
- Cable route connecting the solar farm with National Grid at Drax

TYPICAL IMAGES OF SOLAR PANELS AND ASSOCIATED WORKS



Framework on a mature, grazed solar park



Typical wooden CCTV pole, covering perimeter fence line



Modules mounted, finished array



Wild grass under 132kV power lines

TYPICAL IMAGES OF SOLAR PANELS AND ASSOCIATED WORKS



New highway access with associated security deer fencing



Example of substation



Example of substation



Example of central invertor

TYPICAL LANDSCAPE/VISUAL ENHANCEMENT FROM ANOTHER NSIP PROJECT



TYPICAL LANDSCAPE/VISUAL ENHANCEMENT FROM ANOTHER NSIP PROJECT



3. Activities to date

- Collection of desk top data
- Ecological surveys under -way
- Drafting of Scoping Report
- Planning policy review
- Project launch through press release and letters to MPs
- Work under -way on consultation strategy
- Preparation for commencement of agricultural land classification survey and geophysical surveys with respect to archaeology
- Initial meeting with East Riding of Yorkshire, Selby District Council and North Yorkshire County Council on 4 July 2022

4. Indicative Programme

Month	Q2 2022	Q3 2022	Q4 2022	Q1 2023	Q22023	Q3 2023
EIA Baseline Studies						
Soft launch and wider publication						
EIA Scoping		Aug 2022				
Non-statutory consultation		Autumn				
PEIR Report				Jan 2023		
Statutory Consultation				Feb 2023		
Preparation of application						
Submission						Aug 2023

5. EIA Scoping

- Scoping Report preparation under-way
- Submission date target for late August
- Topics to be included -
 - Introduction
 - The Scheme
 - Alternatives Considered
 - Consultation
 - EIA Methodology
 - Climate Change
 - Cultural Heritage
 - Ecology
 - Flood Risk, Drainage and Surface Water
 - Landscape and Visual Amenity
 - Noise and Vibration
 - Socio-Economics and Land Use
 - Human Health
 - Transport and Access
 - Other Environmental Topics (Air Quality, Glint and Glare, Ground Conditions, Major Accidents and Disasters, Telecomms/TV/Utilities, Waste)
 - Structure of the ES

6. Environmental Surveys

- Ecological surveys – Extended Phase 1 Habitat Survey completed (apart from the cable route). Great Crested Newt (GCN) surveys completed. Breeding bird surveys underway March to July.
- Ecological surveys - Additional surveys may be undertaken as the masterplan for the site progresses e.g. Aquatic surveys if cable route water crossings are required. Additional surveys of the grid connection corridor required.
- Ecological key findings - mostly arable land, drainage ditches throughout the site, trees with bat roost potential identified on field boundaries, owl presence identified, Lapwings observed, Yellowhammer observed, no badger setts identified to date. A district level licencing approach will be sought for GCN
- Landscape – initial site visit undertaken. Zone of Theoretical Visibility has been mapped.
- Archaeology/cultural heritage – preparation of the Written Scheme of Investigation is underway, with geophysical surveys anticipated Autumn 2022.
- Other topics – baseline assessment work underway.

7. Stakeholder Engagement to date

- Stakeholder mapping exercise undertaken . No 'seldom heard' groups identified
- Introductory letter to local MPs, ward councillors and leader of East Riding Council on 1 July . Letter included offer of follow up briefing to MPs and Leader of East Riding Council
- Press release announcing the project issued on 1 July
- Dialogue already underway with landowners to secure necessary land

8. Consultation Strategy

Non-statutory consultation

- Information will be provided online, with a downloadable brochure. Responses via an online questionnaire or via email. Printed copies available on request.
- We are exploring the option of holding an in-person information event at a suitable local venue
- Consultation to run for 28 days. Timing to be agreed, likely autumn 2022
- Results will be published in the consultation report.

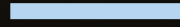
Statutory consultation

- Mix of online and in-person events. Targeted events for key stakeholders
- Consultation will be publicised widely to encourage participation
- Consultation to run for a minimum of 28 days. Timing to be agreed, likely early 2023
- All responses to the consultation will be considered and published in full consultation report. The report will be published online

9. Compulsory Acquisition and Crown Land

- Aim to acquire land by voluntary agreement, including for cable route
- Heads of terms being agreed with land owners
- Seeking easements to facilitate the cable corridor
- Crown Land – to be confirmed through land referencing

THANK YOU



BOOM
POWER